



For more information, contact us:

Head Office:

Bluegiga Technologies Oy

Sinikalliontie 11

FI-02630 Espoo

FINLAND

Phone: +358 9 435 50 60

Fax: +358 9 435 50 66 0

Sales Office / USA:

Bluegiga Technologies, Inc.

99 Derby Street, Suite 200

Hingham, MA 02043

Phone: +1(781) 556-1039

[www.bluegiga.com](http://www.bluegiga.com)

[sales@bluegiga.com](mailto:sales@bluegiga.com)

The WRAP THOR™, iWRAP™, BluRoam™ and Bluegiga Access Server™ are trademarks of Bluegiga Technologies Oy. The *Bluetooth* word mark and logo are registered trademarks owned by The Bluetooth SIG, Inc., U.S.A.

© Bluegiga Technologies



## WT32 Evaluation Kit Quick Start



## ● Package Contents

- 1 x WT32 Evaluation Board
- 1 x Stereo headphones
- 1 x Onboard Installation Kit
- 1 x RS232 Cable
- 1 x USB cable
- 1 x Printed Quick Start
- 1 x Printed License Agreement

## ● Additional Documentation

Additional documentation about WT32 Evaluation Kit, WT32 Bluetooth Audio Module or iWRAP firmware can be downloaded from:

<http://techforum.bluegiga.com/ekwt32/>

User name: ekwt32

Password: 3kWte2

Full design references, design guides and latest firmware updates are available in Bluegiga's Tech Forum, which can be accessed by applying user name and password from:

[http://techforum.bluegiga.com/apply\\_username](http://techforum.bluegiga.com/apply_username)

## ● Technical Support

For all matters regarding the WT32 Evaluation Kit or iWRAP firmware, please contact Bluegiga's technical support: [support@bluegiga.com](mailto:support@bluegiga.com).

Copyright © 2000-2007 Bluegiga Technologies

All rights reserved.

Bluegiga Technologies assumes no responsibility for any errors, which may appear in this manual. Furthermore, Bluegiga Technologies reserves the right to alter the hardware, software, and/or specifications detailed herein at any time without notice, and does not make any commitment to update the information contained herein. Bluegiga Technologies' products are not authorized for use as critical components in life support devices or systems.

The iWRAP and WRAP THOR are registered trademarks of Bluegiga Technologies. The Bluetooth trademark and logo are registered trademarks and are owned by the Bluetooth SIG, Inc.

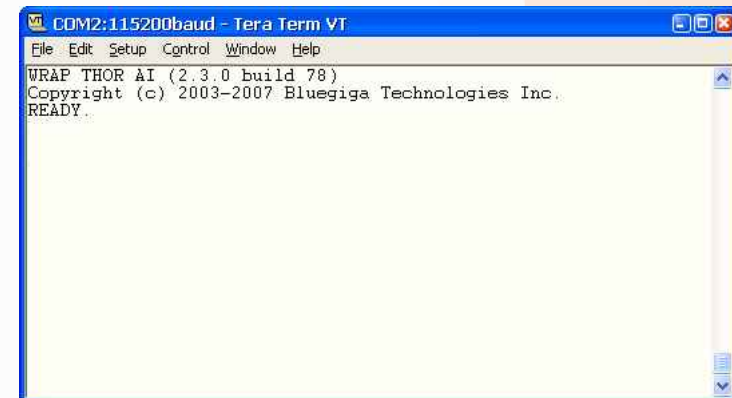
All other trademarks listed herein are owned by their respective owners.

## ● Getting Started

- Connect the WT32 Evaluation Kit to a PC via RS232 and USB cables
- Open a terminal software and create a new connection with the following settings:

Baud rate:	115200
Data bits:	8
Parity:	None
Stop bits:	1
Flow control:	Hardware

- Power up the WT32 Evaluation Kit by turning the power switch to "ON" position
- The power led should turn on and you should see iWRAP boot prompt appear on the terminal window



- When the boot prompt appears iWRAP firmware is ready for use.
- You can test iWRAP firmware for example with the following commands:

Command: "AT"	Response: OK
Command: "INQUIRY 5"	Response: Starts Bluetooth device discovery
Command: "SET PROFILE A2DP ON"	Response: Turns Bluetooth A2DP profile on Becomes active after a reset.
Command: "SET BT CLASS 200428"	Response: Configures WT32 as an audio device. Required for mobile phones.
- Now you can try to discover and connect WT32 from your Bluetooth enabled mobile phone, Laptop or PDA.
- Refer to iWRAP user guide for more information about iWRAP firmware and usage examples.